

# Guidance for Monitoring COVID-19 for Local Programs



## Guidance to Assist SOPA Local Programs in Monitoring COVID-19

### **Monitoring COVID-19 for Local Programs**

As the COVID-19 situation continues to change and evolve across the state, it is important for local Programs to constantly evaluate the specific situation in their area and assess whether changes need to be made in their return to activities status (i.e. whether it is safe to request to advance to the next reopening phase, stay in the current phase, or even revert to a prior phase.)

Monitoring COVID-19 in your area may be done using many sources including websites and through local news online or on television. Some data that may be useful for evaluating returning to activities status include:

- Changes (up or down) in the amount of new confirmed cases in a county or zip code
- Changes in the percentage of positive results from COVID-19 testing
- Changes in the number of COVID-19 cases per 100,000 people

Report any concerns about the safety of continuing activity, such as a spike in the number of newly reported cases in their county, to Chelsea Hammell at [chammell@specialolympicspa.org](mailto:chammell@specialolympicspa.org). She will work with you to make an informed decision.

### **Where to Find Local COVID-19 Data**

Sites with statewide information are found below and include the PA Department of Health, Carnegie Mellon University, Johns Hopkins University, and Harvard Global Institute. Many counties also have data on their county sites. **Available county COVID-19 information sites can be found on Page 4 of this document.**

General sites suggested are found here:

#### **PA Department of Health Site:**

<https://www.health.pa.gov/topics/disease/coronavirus/Pages/Coronavirus.aspx>

#### **Carnegie Mellon Site:**

[https://covidcast.cmu.edu/?sensor=doctor-visits-smoothed\\_adj\\_cli&level=county&region=42003&date=20200704&signalType=value](https://covidcast.cmu.edu/?sensor=doctor-visits-smoothed_adj_cli&level=county&region=42003&date=20200704&signalType=value)

#### **Johns Hopkins Site:**

<https://coronavirus.jhu.edu/us-map>

#### **Harvard Global Health Institute:**

<https://globalepidemics.org/key-metrics-for-covid-suppression/>

[The Children's Hospital of Philadelphia has a predictive model and projects the number of cases 2 weeks ahead \(NB: it covers only eastern Pennsylvania counties as well as Allegheny, Beaver and Westmoreland\):](#)

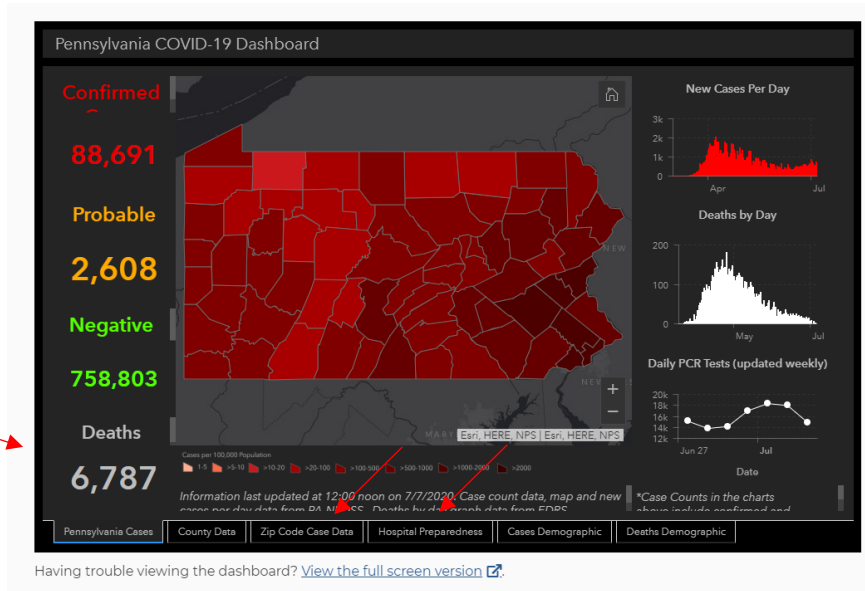
#### **CHOP Policy Lab:**

<https://policylab.chop.edu/covid-lab-mapping-covid-19-your-community>

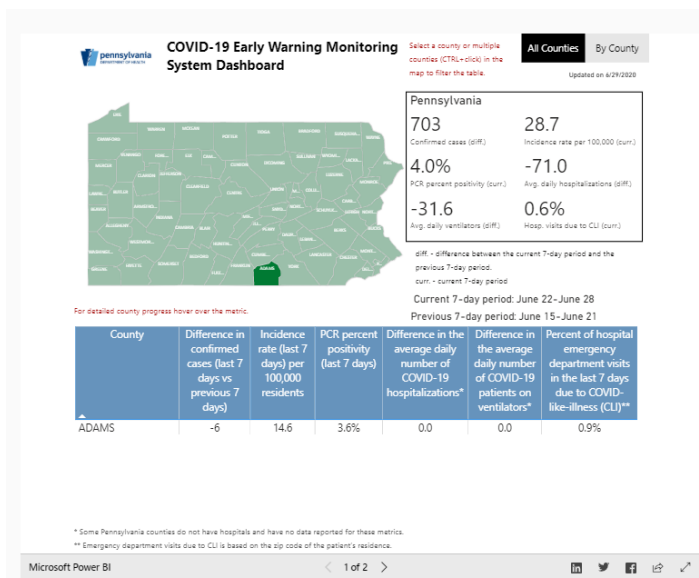
# Guidance for Monitoring COVID-19 for Local Programs



The PA Department of Health site is recommended, because it has easily accessed indicators by both county and zip code:



The PA Department of Health monitoring dashboard gives county specific indicators over a 14 day period (comparing previous and current last 7 days) by selecting county in a drop down:

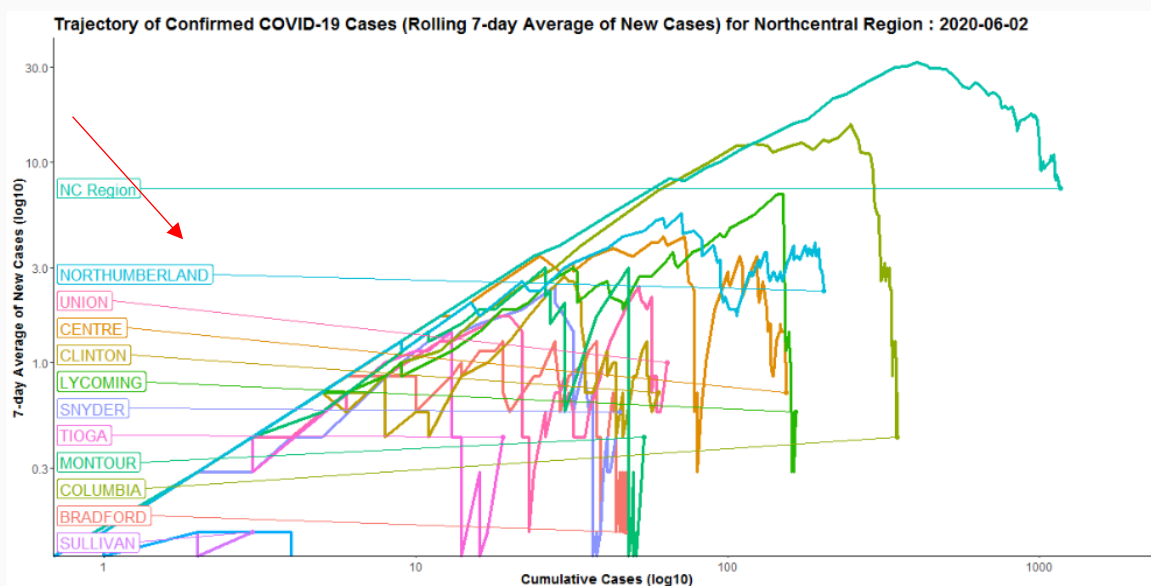


# Guidance for Monitoring COVID-19 for Local Programs



And, data trajectory maps are found here with maps by region and county within them:  
<https://www.health.pa.gov/topics/disease/coronavirus/Pages/Data-Animations.aspx>

## Trajectory of Confirmed COVID-19 Cases (7-day Rolling Average) For Northcentral



County	Region	Area	County COVID site/website page with updated info and/or data
Adams County	Region 7	East	<a href="http://www.adamscounty.us/Pages/AdamsCountyCoronavirusUpdates.aspx">http://www.adamscounty.us/Pages/AdamsCountyCoronavirusUpdates.aspx</a>
Allegheny County	Region 9	West	<a href="https://www.alleghenycounty.us/Health-Department/Resources/COVID-19/COVID-19.aspx">https://www.alleghenycounty.us/Health-Department/Resources/COVID-19/COVID-19.aspx</a>
Armstrong County	Region 9	West	NO INFORMATION ON SITE
Beaver County	Region 9	West	<a href="https://www.bccog.org/covid-19-database">https://www.bccog.org/covid-19-database</a>
Bedford County	Region 8	West	<a href="https://www.bedfordcountypa.org/covid-19_update/index.php">https://www.bedfordcountypa.org/covid-19_update/index.php</a>
Berks County	Region 5	East	<a href="https://www.co.berks.pa.us/Dept/DES/Pages/Corona-Virus.aspx">https://www.co.berks.pa.us/Dept/DES/Pages/Corona-Virus.aspx</a>
Blair County	Region 8	West	<a href="https://www.blairco.org/Dept/SocialServices/Pages/COVID19Info.aspx">https://www.blairco.org/Dept/SocialServices/Pages/COVID19Info.aspx</a>
Bradford County	Region 3	East	<a href="https://bradfordcountypa.org/covid-19-information/">https://bradfordcountypa.org/covid-19-information/</a>
Bucks County	Region 6	East	<a href="https://covid19-bucksgis.hub.arcgis.com/">https://covid19-bucksgis.hub.arcgis.com/</a>
Butler County	Region 9	West	<a href="https://www.butlercountypa.gov/DocumentCenter/View/1270/COVID-19-Resources">https://www.butlercountypa.gov/DocumentCenter/View/1270/COVID-19-Resources</a>
Cambria County	Region 8	West	NO INFORMATION ON SITE
Cameron County	Region 2	West	<a href="http://www.cameroncountypa.com/covid-19/resources.php">http://www.cameroncountypa.com/covid-19/resources.php</a>
Carbon County	Region 5	East	NO HEALTH/DATA INFORMATION ON SITE
Centre County	Region 2	West	<a href="https://covid-19-centrecountygov.hub.arcgis.com/">https://covid-19-centrecountygov.hub.arcgis.com/</a>
Chester County	Region 6	East	<a href="https://www.chesco.org/4497/Coronavirus-COVID-19-Maps-and-Data">https://www.chesco.org/4497/Coronavirus-COVID-19-Maps-and-Data</a>
Clarion County	Region 1	West	<a href="http://www.co.clarion.pa.us/Dept/PublicSafety/Pages/COVID19/home.aspx">http://www.co.clarion.pa.us/Dept/PublicSafety/Pages/COVID19/home.aspx</a>
Clearfield County	Region 2	West	NO INFORMATION ON SITE
Clinton County	Region 2	West	<a href="https://clinton-county-pa-coronavirus-resources-clintonpamapping.hub.arcgis.com/">https://clinton-county-pa-coronavirus-resources-clintonpamapping.hub.arcgis.com/</a>
Columbia County	Region 3	East	<a href="http://ema.columbiapa.org/covid-19/">http://ema.columbiapa.org/covid-19/</a>
Crawford County	Region 1	West	<a href="https://www.crawfordcountypa.net/Pages/coronavirus-updates.aspx">https://www.crawfordcountypa.net/Pages/coronavirus-updates.aspx</a>
Cumberland County	Region 7	East	<a href="https://www.ccpa.net/covid19">https://www.ccpa.net/covid19</a>
Dauphin County	Region 7	East	<a href="https://www.dauphincounty.org/government/departments/public_safety/emergency_information">https://www.dauphincounty.org/government/departments/public_safety/emergency_information</a>
Delaware County	Region 6	East	<a href="https://www.delcopa.gov/ich/resources/coronavirus.html">https://www.delcopa.gov/ich/resources/coronavirus.html</a>
Elk County	Region 2	West	NO INFORMATION ON SITE
Erie County	Region 2	West	<a href="https://eriecountypa.gov/covid-19/what-you-should-know-about-covid-19/">https://eriecountypa.gov/covid-19/what-you-should-know-about-covid-19/</a>
Fayette County	Region 9	West	<a href="https://www.fayettedcountypa.org/760/COVID-19">https://www.fayettedcountypa.org/760/COVID-19</a>
Forest County	Region 1	West	<a href="http://www.co.forest.pa.us/news_detail_T8_R36.php">http://www.co.forest.pa.us/news_detail_T8_R36.php</a>
Franklin County	Region 8	West	<a href="https://www.healthfranklincounty.org/partner-resources">https://www.healthfranklincounty.org/partner-resources</a>
Fulton County	Region 8	West	NO HEALTH/DATA INFORMATION ON SITE
Greene County	Region 9	West	<a href="https://www.co.greene.pa.us/coronavirus">https://www.co.greene.pa.us/coronavirus</a>
Huntingdon County	Region 8	West	<a href="http://www.huntingdoncounty.net/Pages/COVID-19-Updates.aspx">http://www.huntingdoncounty.net/Pages/COVID-19-Updates.aspx</a>
Indiana County	Region 9	West	<a href="https://www.indianacountypa.gov/covid-19-info/">https://www.indianacountypa.gov/covid-19-info/</a>
Jefferson County	Region 2	West	<a href="https://www.jeffersoncountypa.com/emergency-management/covid-19-jefferson-resources-2020/">https://www.jeffersoncountypa.com/emergency-management/covid-19-jefferson-resources-2020/</a>
Juniata County	Region 7	East	<a href="https://www.juniataco.org/covid-19-response/">https://www.juniataco.org/covid-19-response/</a>
Lackawanna County	Region 4	East	<a href="https://www.lackawannacounty.org/index.php/departmentsagencies/public-safety/emergency-serv">https://www.lackawannacounty.org/index.php/departmentsagencies/public-safety/emergency-serv</a>
Lancaster County	Region 7	East	<a href="https://covid-19-lancastercountypa.hub.arcgis.com/">https://covid-19-lancastercountypa.hub.arcgis.com/</a>
Lawrence County	Region 9	West	<a href="https://co.lawrence.pa.us/">https://co.lawrence.pa.us/</a>
Lebanon County	Region 7	East	<a href="https://covid19.lcdes.org/">https://covid19.lcdes.org/</a>
Lehigh County	Region 5	East	<a href="https://lehigh-county-covid-19-response-lehighgis.hub.arcgis.com/">https://lehigh-county-covid-19-response-lehighgis.hub.arcgis.com/</a>
Luzerne County	Region 4	East	<a href="https://www.discovernepa.com/featured/luzerne-county-covid-19/">https://www.discovernepa.com/featured/luzerne-county-covid-19/</a>
Lycoming County	Region 3	East	<a href="https://lycoming-county-pa-covid-19-lyco.hub.arcgis.com/">https://lycoming-county-pa-covid-19-lyco.hub.arcgis.com/</a>
Mckean County	Region 2	West	<a href="https://www.mckeancountypa.org/news_detail_T6_R1.php">https://www.mckeancountypa.org/news_detail_T6_R1.php</a>
Mercer County	Region 1	West	<a href="https://www.mcc.co.mercer.pa.us/covid19/">https://www.mcc.co.mercer.pa.us/covid19/</a>
Mifflin County	Region 7	East	<a href="http://www.co.mifflin.pa.us/Pages/COUNTY-ANNOUNCEMENT.aspx">http://www.co.mifflin.pa.us/Pages/COUNTY-ANNOUNCEMENT.aspx</a>
Monroe County	Region 5	East	<a href="http://www.monroecountypa.gov/Dept/Commissioners/Pages/CoronaAnnouncements.aspx">http://www.monroecountypa.gov/Dept/Commissioners/Pages/CoronaAnnouncements.aspx</a>
Montgomery County	Region 6	East	<a href="https://data-montcopa.opendata.arcgis.com/pages/covid-19">https://data-montcopa.opendata.arcgis.com/pages/covid-19</a>
Montour County	Region 3	East	<a href="http://www.montourco.org/Pages/Montour-County-COVID-19-Resources.aspx">http://www.montourco.org/Pages/Montour-County-COVID-19-Resources.aspx</a>
Northampton County	Region 5	East	<a href="https://northampton.maps.arcgis.com/apps/opsdashboard/index.html#/a90733c6c4e1469289ec8">https://northampton.maps.arcgis.com/apps/opsdashboard/index.html#/a90733c6c4e1469289ec8</a>
Northumberland County	Region 3	East	<a href="https://www.norrycopa.net/index.php/covid-19-information-center/">https://www.norrycopa.net/index.php/covid-19-information-center/</a>
Perry County	Region 7	East	NO HEALTH/DATA INFORMATION ON SITE
Philadelphia County	Region 6	East	<a href="https://www.phila.gov/programs/coronavirus-disease-2019-covid-19/">https://www.phila.gov/programs/coronavirus-disease-2019-covid-19/</a>
Pike County	Region 4	East	<a href="https://news.pikepa.org/post/2020/03/09/COVID-19-Update">https://news.pikepa.org/post/2020/03/09/COVID-19-Update</a>
Potter County	Region 2	West	<a href="http://today.pottercountypa.net/">http://today.pottercountypa.net/</a>
Schuylkill County	Region 5	East	<a href="https://scema.org/">https://scema.org/</a>
Snyder County	Region 3	East	NO HEALTH/DATA INFORMATION ON SITE
Somerset County	Region 8	West	<a href="http://www.co.somerset.pa.us/department.asp?deptnum=211">http://www.co.somerset.pa.us/department.asp?deptnum=211</a>
Sullivan County	Region 3	East	NO HEALTH/DATA INFORMATION ON SITE
Susquehanna County	Region 4	East	<a href="http://www.susqco.com/Dept/EMA/Pages/COVID-19-Resources.aspx">http://www.susqco.com/Dept/EMA/Pages/COVID-19-Resources.aspx</a>
Tioga County	Region 3	East	<a href="http://www.tiogacountypa.us/Departments/Pages/COVID19.aspx">http://www.tiogacountypa.us/Departments/Pages/COVID19.aspx</a>
Union County	Region 3	East	<a href="https://www.unioncountypa.org/departments/commissioners/covid-19/covid-19-information-pag">https://www.unioncountypa.org/departments/commissioners/covid-19/covid-19-information-pag</a>
Venango County	Region 1	West	<a href="https://co.venango.pa.us/CivicAlerts.aspx?AID=56">https://co.venango.pa.us/CivicAlerts.aspx?AID=56</a>
Warren County	Region 1	West	NO HEALTH/DATA INFORMATION ON SITE
Washington County	Region 9	West	<a href="https://www.co.washington.pa.us/682/COVID-19-maps">https://www.co.washington.pa.us/682/COVID-19-maps</a>
Wayne County	Region 4	East	<a href="http://waynecountypa.gov/842/COVID-19-Response">http://waynecountypa.gov/842/COVID-19-Response</a>
Westmoreland County	Region 9	West	<a href="https://www.co.westmoreland.pa.us/2891/COVID-19-Cases-in-Westmoreland-County">https://www.co.westmoreland.pa.us/2891/COVID-19-Cases-in-Westmoreland-County</a>
Wyoming County	Region 4	East	NO INFORMATION ON SITE
York County	Region 7	East	<a href="https://yorkcountypa.gov/communications-office/news/1847-covid-19-cases-and-deaths-graphic.h">https://yorkcountypa.gov/communications-office/news/1847-covid-19-cases-and-deaths-graphic.h</a>